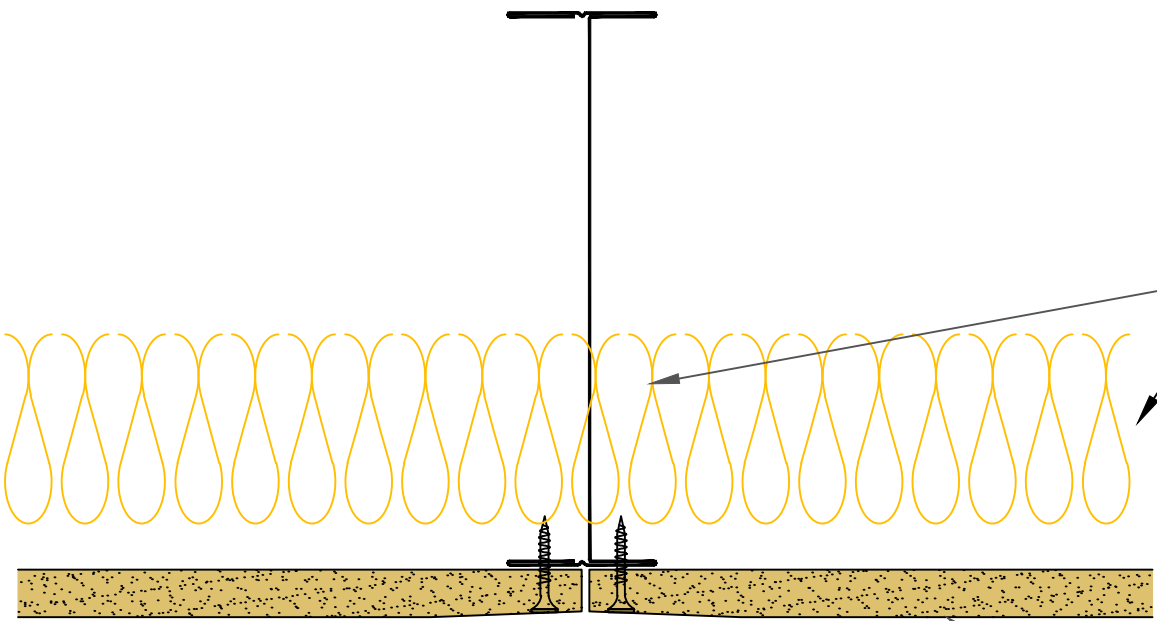
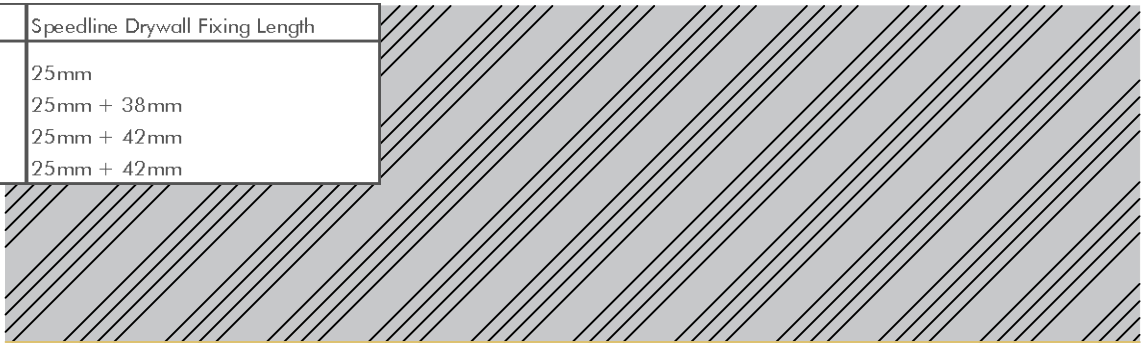


| Board Thickness | Speedline Drywall Fixing Length |
|-----------------|---------------------------------|
| 12.5mm & 15mm   | 25mm                            |
| 12.5mm + 12.5mm | 25mm + 38mm                     |
| 12.5mm + 15mm   | 25mm + 42mm                     |
| 15mm + 15mm     | 25mm + 42mm                     |



SPEEDLINE 146mm 'I' Studs at 600mm Ctrs

50mm APR

12.5mm British Gypsum Gyproc WallBoard fixed with SPEEDLINE Drywall Screws at 300mm centres (200mm centres at external angles). Ref to table for fixing length.

All performance data and system specifications are for systems constructed with materials & components as shown. The inclusion or substitution of any other manufacturers materials or components could invalidate test data and system performance and permission must be given in writing by SIG PLC.

The information is provided in good faith and is based upon details received which are assumed to include all relevant facts.

We accept no liability for its accuracy, adequacy or completeness. Recipients must satisfy themselves as to its suitability as we do not accept responsibility for any claims or consequential loss. Acceptance of the content and subsequent design responsibility rests entirely with the recipients who should then produce accepted details on their own company documentation.

CDR No: IWL146-B-51(50)

DATE: 22/10/19

INDEPENDENT 'I' STUD LINING

Details to be read in conjunction with project specification guidelines

Adsetts House,  
16 Europa View,  
Sheffield Business Park,  
Sheffield,  
S9 1XH.

T: 0114 231 8030

E: enquiries@speedlinedrywall.co.uk

